

Analyzing Imperial Motives



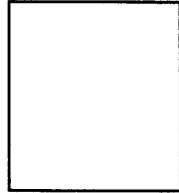
Your Symbol

ECONOMIC motives included the desire to **make money**, to expand and **control** foreign **trade**, to create **new markets** for products, to acquire **raw materials** and cheap **labor**, to compete for **investments** and resources, and to **export** industrial **technology** and transportation methods.



Your Symbol

EXPLORATORY motives were based on the desire to **explore** “**unknown**” or uncharted territory, to conduct **scientific research**, to conduct **medical searches** for the causes and treatment of diseases, to go on an **adventure**, and to **investigate** “unknown” lands and **cultures**.



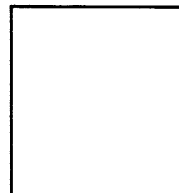
Your Symbol

POLITICAL motives were based on a nation’s desire to **gain power**, to **compete** with other European countries, to **expand territory**, to exercise **military force**, to gain **prestige** by **winning colonies**, and to boost **national pride** and security.



Your Symbol

IDEOLOGICAL motives were based on **cultural values** such as the belief that the **white** race was **superior**, other cultures were “**primitive**,” Europeans **should** “**civilize**” peoples in other parts of the world, great **nations** should **have empires**, and only the **strongest** nations will **survive**.



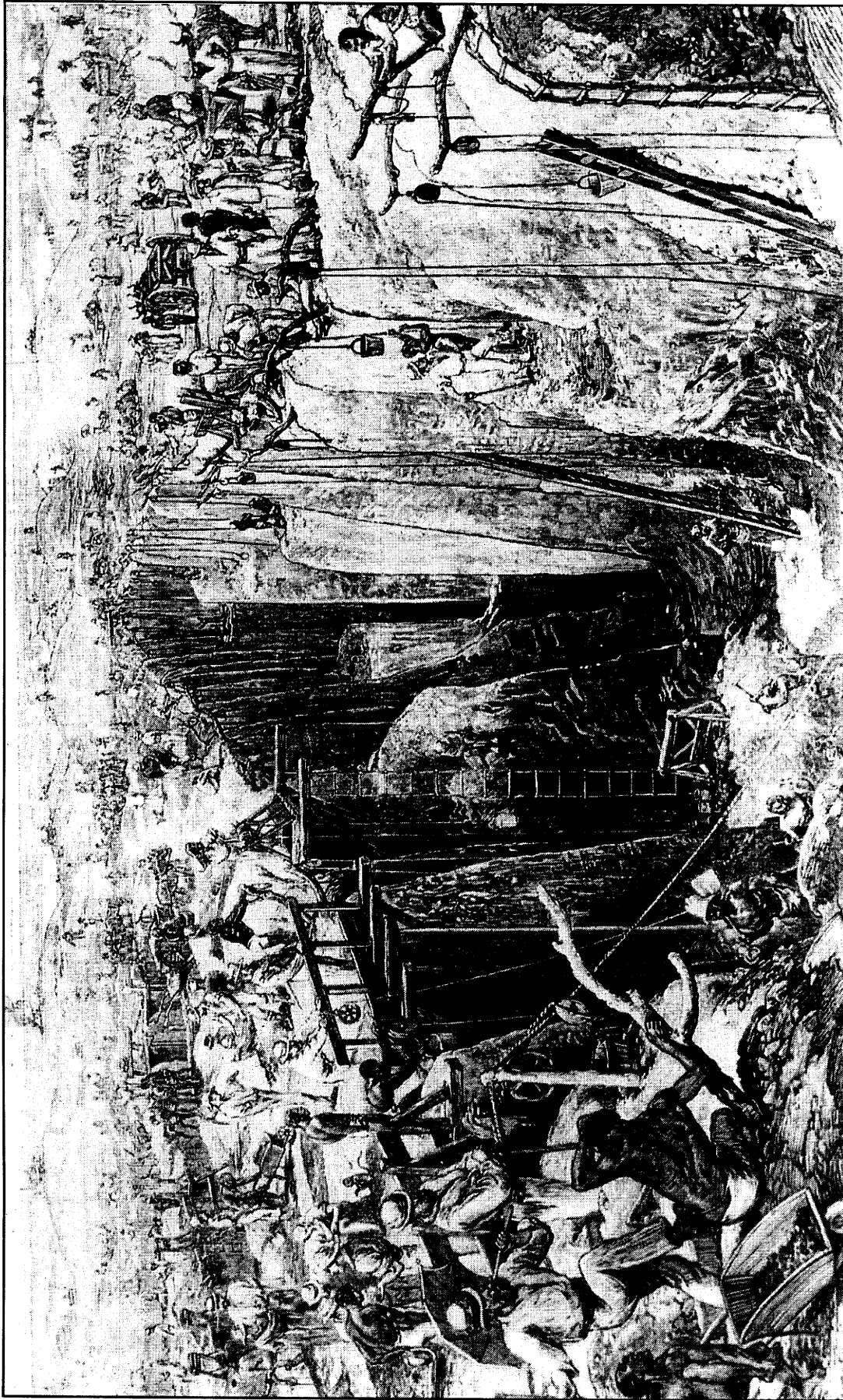
Your Symbol

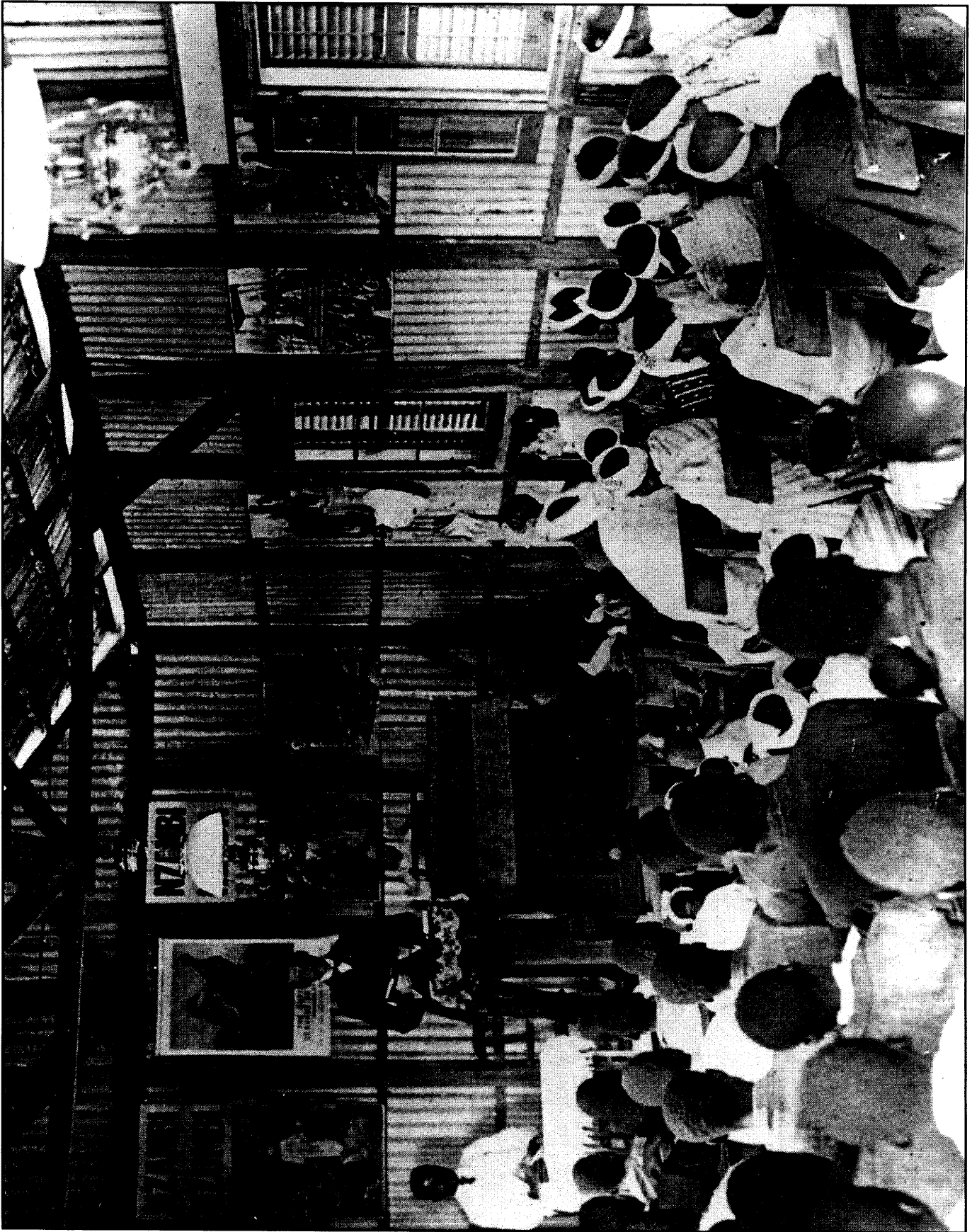
RELIGIOUS motives included the desire to **spread Christianity**, to **protect** European missionaries in other lands, to **spread** European **values** and **moral beliefs**, to **educate** peoples of other cultures, and to **end slave trade** in Africa.

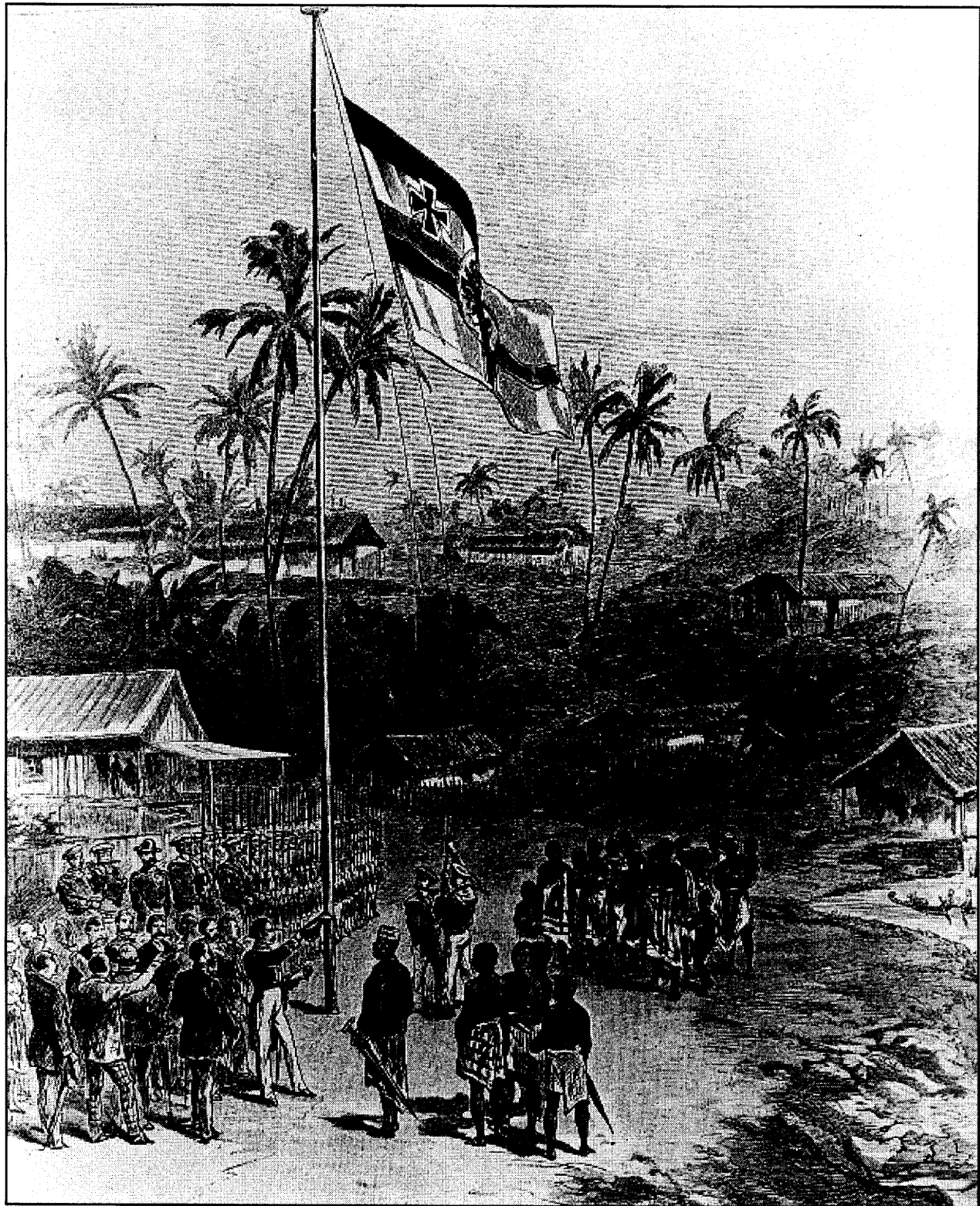
Placard	Describe What You See	Symbol of Motive(s)	Why You Chose This Motive(s)
A			
B			
C			

Placard	Describe What You See	Symbol of Motive(s)	Why You Chose This Motive(s)
D			
E			
F			
G			
H			
I			

Placard	Describe What You See	Symbol of Motive(s)	Why You Chose This Motive(s)
J			
K			
L			
M			
N			
O			





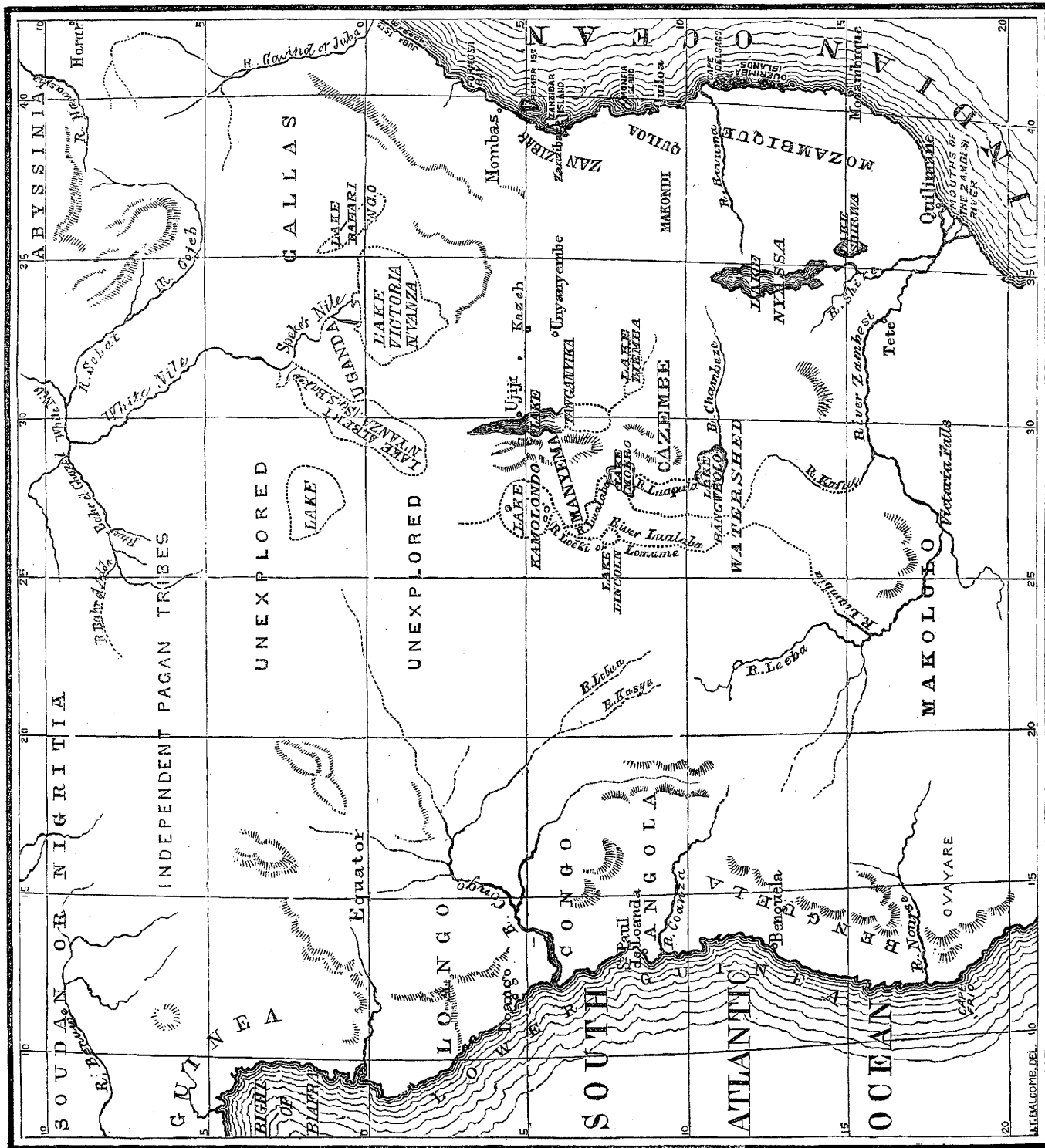


As yet the Congo basin is a blank, a fruitless waste, a desolate and unproductive area.... It has been our purpose to fill this blank with life, to redeem this waste, to plant and sow that the dark man may gather, to vivify the wide, wild lands so long forgotten by Europe. But cursed be he or they who, animated by causeless jealousy and a spirit of mischief, will compel us to fire our station, destroy our work so conspicuously begun, and abandon Africa to its pristine helplessness and savagery.

—Henry Stanley, 1882



BRINGING IVORY TO THE WAGGONS IN SOUTH AFRICA.



Excerpt from *The White Man's Burden*

Take up the White Man's Burden—
Send forth the best ye breed—
Go bind your sons to exile—
To serve your captives' need;
To wait in heavy harness,
On fluttered fold and wild—
Your new-caught, sullen peoples,
Half-devil and half-child.

—Rudyard Kipling, 1899



The first step towards lightening

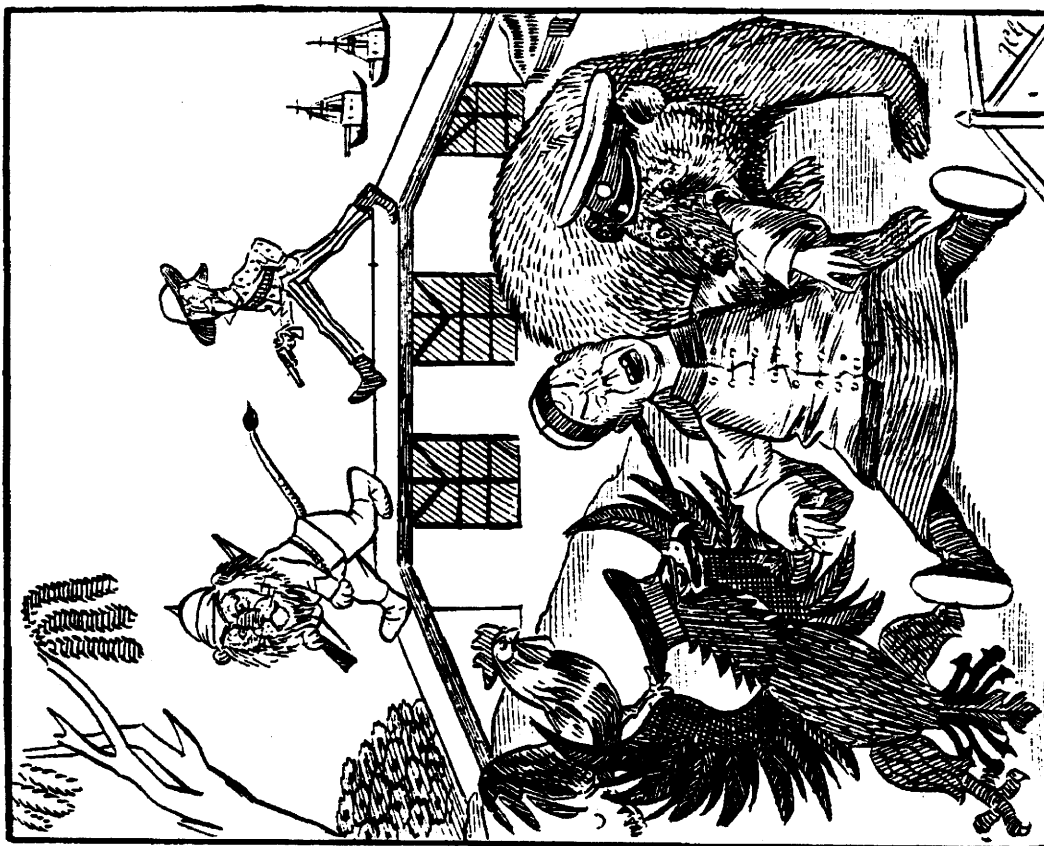
The White Man's Burden

is through teaching the virtues of cleanliness.

Pears' Soap

is a potent factor in brightening the dark corners of the earth as civilization advances, while amongst the cultured of all nations it holds the highest place—it is the ideal toilet soap.





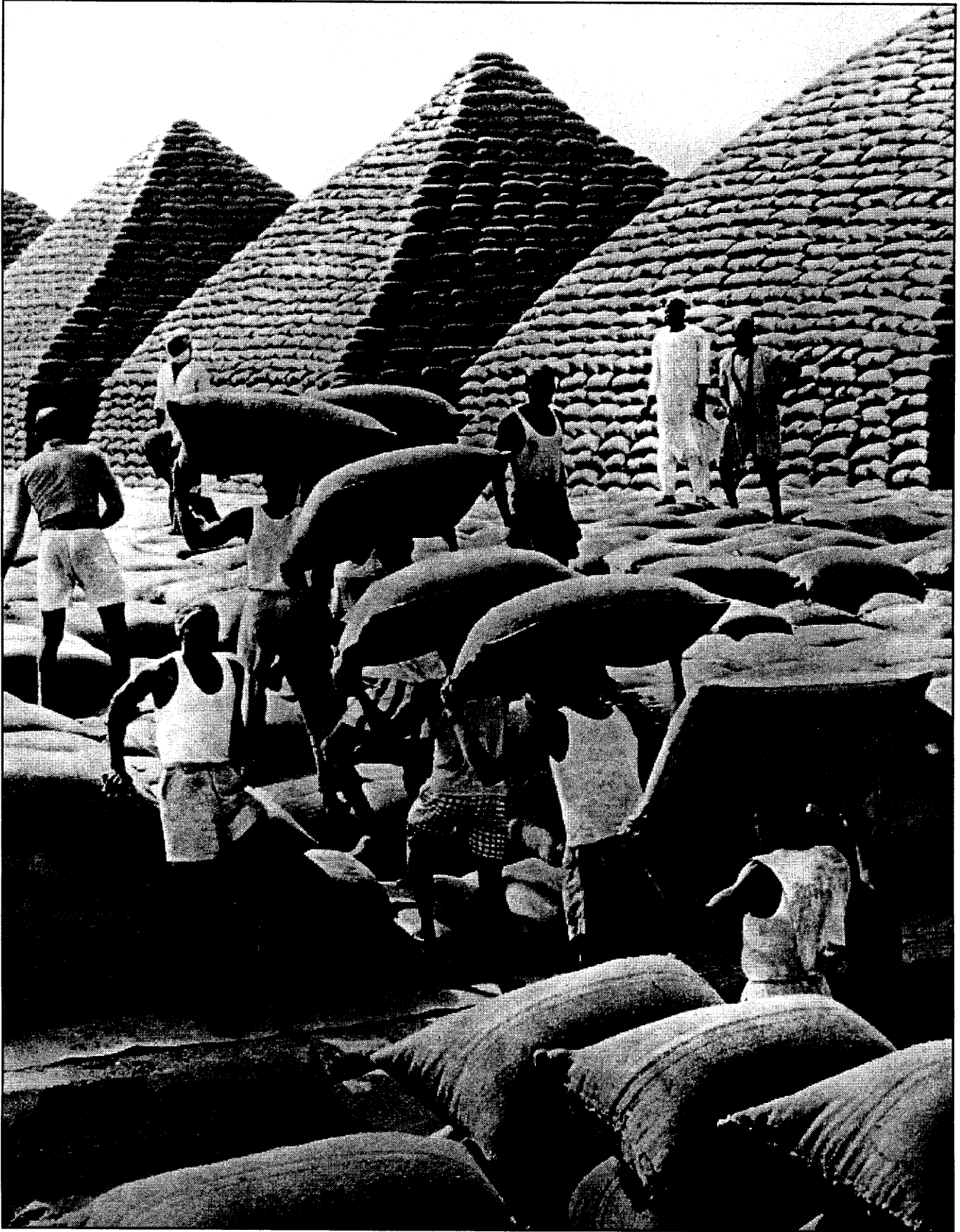
"The Heathen Chinese! The Heathen Chinese!"

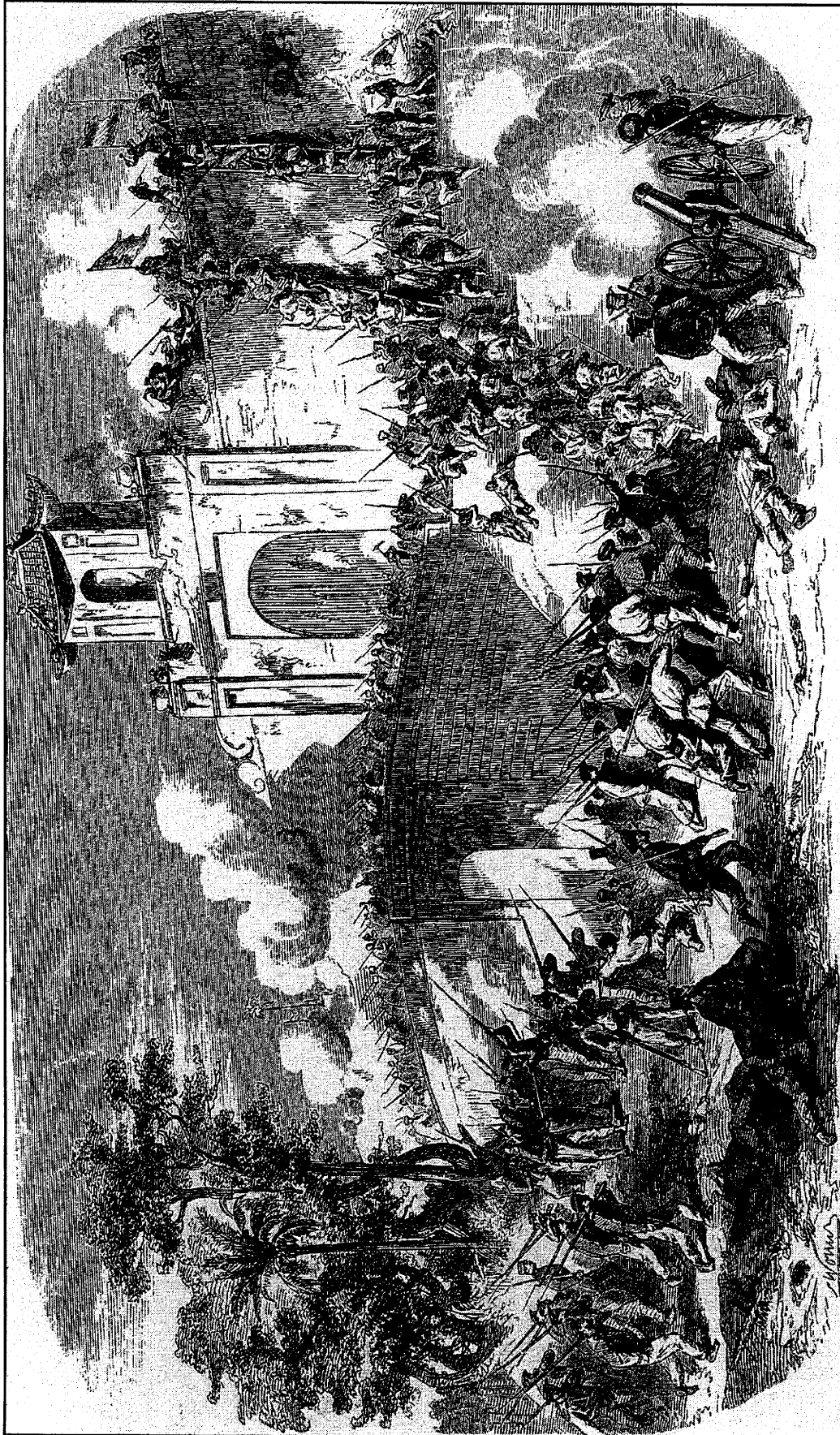
The Partition of China

THE Heathen Chinese! The Heathen Chinese!
 What a channel for Christian Expansion is he.
 Then Ho! for the Flowery Land of the East,
 Like vultures we'll swoop on the promising feast.
 Commission your Navies, ye Nations so free,
 To bear the true light to the Heathen Chinese.

If Russia 'makes converts,' it's perfectly clear
 We need for 'converting' a well-defined sphere;
 If Germany's 'missions' hold meetings for prayer,
 So Christian a work 'tis our duty to share.
 Incidentally, too, there is cash to be made;
 There's naught like Religion to stimulate Trade.

Then come all ye Teachers and Preachers and Fighters,
 Backed up by the Press and its wonderful writers,
 Let's give to this darkened and downtrodden nation
 A touch of the blessings of Civilisation.
 And our Christian 'Maxims' will work, you will see,
 A change for the good in that Heathen Chinese.





LIPTON'S TEAS.

FINEST THE
WORLD CAN
PRODUCE

1/7 PER LB.

NO HIGHER PRICE.

**RICH PURE
& FRAGRANT**
1/2 and 1/4 PER LB.

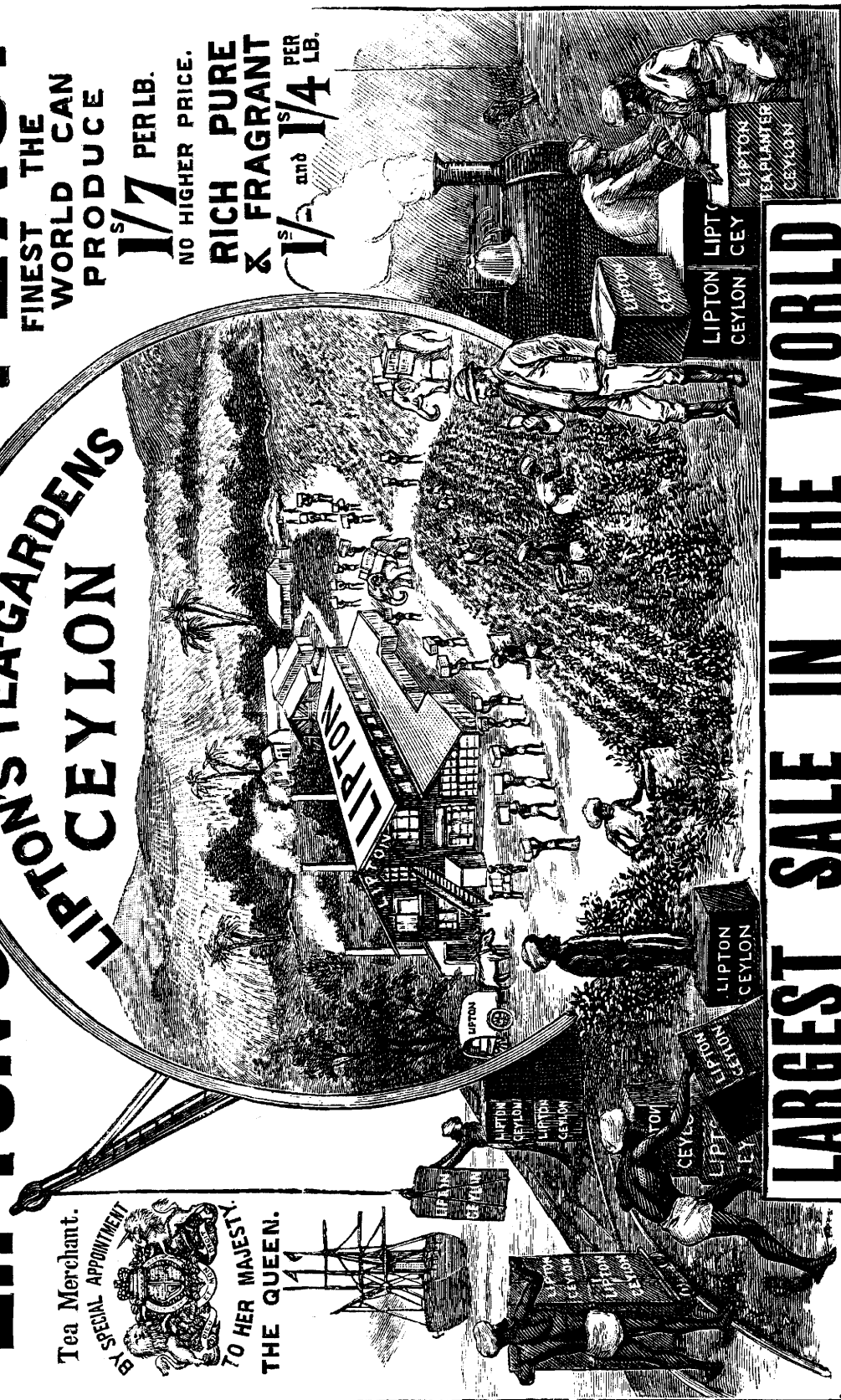
ONE OF
LIPTON'S TEA-GARDENS
CEYLON

Tea Merchant.

BY SPECIAL APPOINTMENT



TO HER MAJESTY
THE QUEEN.



LARGEST SALE IN THE WORLD

Branches and Agencies throughout the World.

Chief Offices : City Road, London.



I beg to direct your attention to Africa; I know that in a few years I shall be cut off in that country, which is now open: Do not let it be shut again! I go back to Africa to try to make an open path for commerce and Christianity; do you carry out the work which I have begun. *I leave it with you!*

—David Livingstone, 1857

